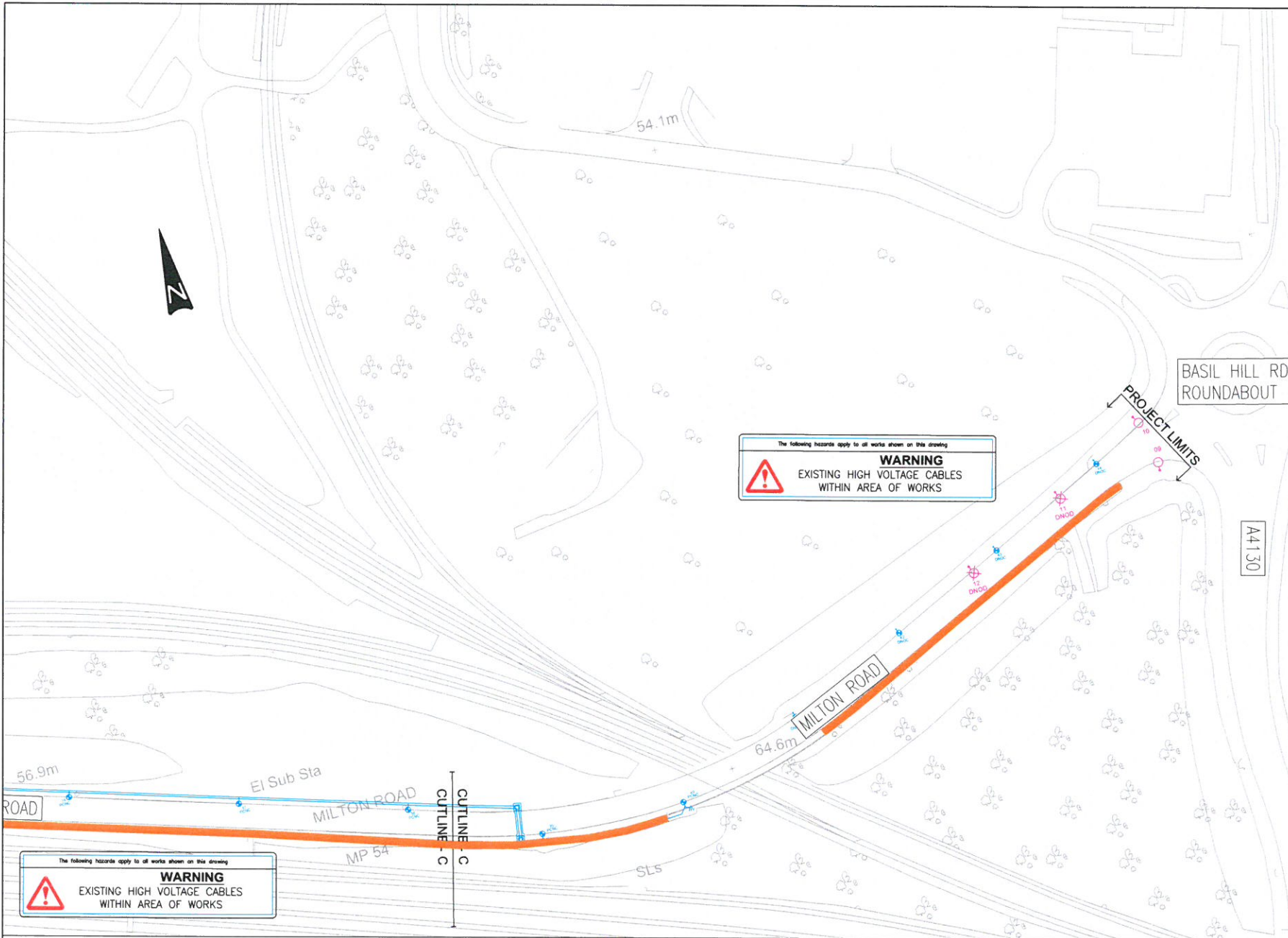


DO NOT SCALE

- KEY:**
- EXISTING ROAD LIGHTING COLUMN INCLUDING SINGLE BRACKET ARM AND LUMINAIRE UNIT TO REMAIN.
 - EXISTING ROAD LIGHTING COLUMN INCLUDING SINGLE BRACKET ARM AND LUMINAIRE UNIT TO BE REMOVED TO TIP OFF SITE.
 - PROPOSED ALUMINUM ROAD LIGHTING COLUMN OF 10M NOMINAL HEIGHT WITH PLANTED BASE AND POST TOP MOUNTED (AT 0° TILT) PHILIPS LUMA 1 (NW DW12, 16.0 KLM HW) LED LUMINAIRE UNIT INCORPORATING ELECTRONIC DALI DIMMABLE DRIVER AND CMS NODE.
 - PROPOSED ALUMINUM ROAD LIGHTING COLUMN OF 11.50M NOMINAL HEIGHT WITH PLANTED BASE AND POST TOP MOUNTED (AT 0° TILT) PHILIPS LUMA 1 (NW DW10, 11.50 KLM HW) LED LUMINAIRE UNIT INCORPORATING ELECTRONIC DALI DIMMABLE DRIVER AND CMS NODE.
 - PROPOSED ROAD LIGHTING CABLE LAID IN A 1x100mm² DUCT.
 - PROPOSED 2x ROAD LIGHTING CABLE LAID IN A 1x100mm² DUCT.
 - PROPOSED CROSS CARRIAGEWAY 2x100mm² DUCTS.
 - PROPOSED (450mm x 450mm) ROAD LIGHTING CHAMBER.
 - PROPOSED ROAD LIGHTING FEEDER PILLAR.
 - PROPOSED EARTH ELECTRODE.
 - DNOC DISTRIBUTION NETWORK OPERATOR SUPPLY CONNECTION.
 - PCNC PRIVATE CABLE NETWORK SUPPLY CONNECTION.
 - DNOD DISTRIBUTION NETWORK OPERATOR SUPPLY DISCONNECTION.

- NOTES:**
1. ALL CABLE ROUTES AND CROSS CARRIAGEWAY DUCTS SHOWN ARE INDICATIVE ONLY AND SHOULD BE CONFIRMED ON SITE PRIOR TO COMMENCEMENT OF ANY WORKS.
 2. ANY INCURANCES ARE TO BE REPORTED TO THE ORDERING ORGANISATION OR SITE ENGINEER IMMEDIATELY.
 3. REFERENCES SHOWN WITHIN THE DRAWINGS HAVE BEEN ASSIGNED FOR THE PURPOSE OF THESE WORKS ONLY.
 4. ALL WORKS SHALL BE IN ACCORDANCE WITH THE LOCAL AUTHORITY ROAD LIGHTING SPECIFICATION.
 5. THE DRAWINGS DO NOT DETAIL STATUTORY UNDERTAKERS INFORMATION. THESE SHOULD BE SOURCED PRIOR TO COMMENCEMENT OF WORKS.
 6. ALL ROAD LIGHTING COLUMNS LOCATIONS TO BE AGREED ON SITE.

PRICE ONLY THE VEGETATION CLEARANCE, SIDING OUT AND RESIDUAL WEED KILLER WORKS; NOT THE STREET LIGHTING WORKS AT THIS STAGE.



The following hazards apply to all works shown on this drawing

WARNING
EXISTING HIGH VOLTAGE CABLES
WITHIN AREA OF WORKS

The following hazards apply to all works shown on this drawing

WARNING
EXISTING HIGH VOLTAGE CABLES
WITHIN AREA OF WORKS

KEY:

SIDING OUT OF FOOTWAY / CYCLEWAY TO CLEAR OFF THE WHOLE OF THE ASPHALT, STRIM DOWN TO GROUND LEVEL FIRST 1.0M OF VERGE BEHIND FOOTWAY / CYCLEWAY. APPLY RESIDUAL WEED KILLER TO FIRST 0.6M OF VERGE BEHIND FOOTWAY / CYCLEWAY.

REV	DATE	BY	DESCRIPTION	CHK	APP
FOR PRICING					

wsp

One Queens Drive, Birmingham, B5 4PJ, UK
T +44 (0) 121 352 4700, F +44 (0) 121 352 4701
wsp.com

OXFORDSHIRE COUNTY COUNCIL

CONTRACTOR: **SKANSKA**

PROJECT: SCIENCE VALE CYCLING NETWORK
ROUTE 6A - MILTON ROAD

FILE: VEGETATION CLEARANCE
SHEET 4 OF 4

SCALE 1:1	1:500	DATE	7A	APPROVED	MM
DRAWN	SB	DATE	18 July 17		
PROJECT NO.	70023481	DRAWING NO.	RT6B_200_004	REV	A

© WSP Group Ltd