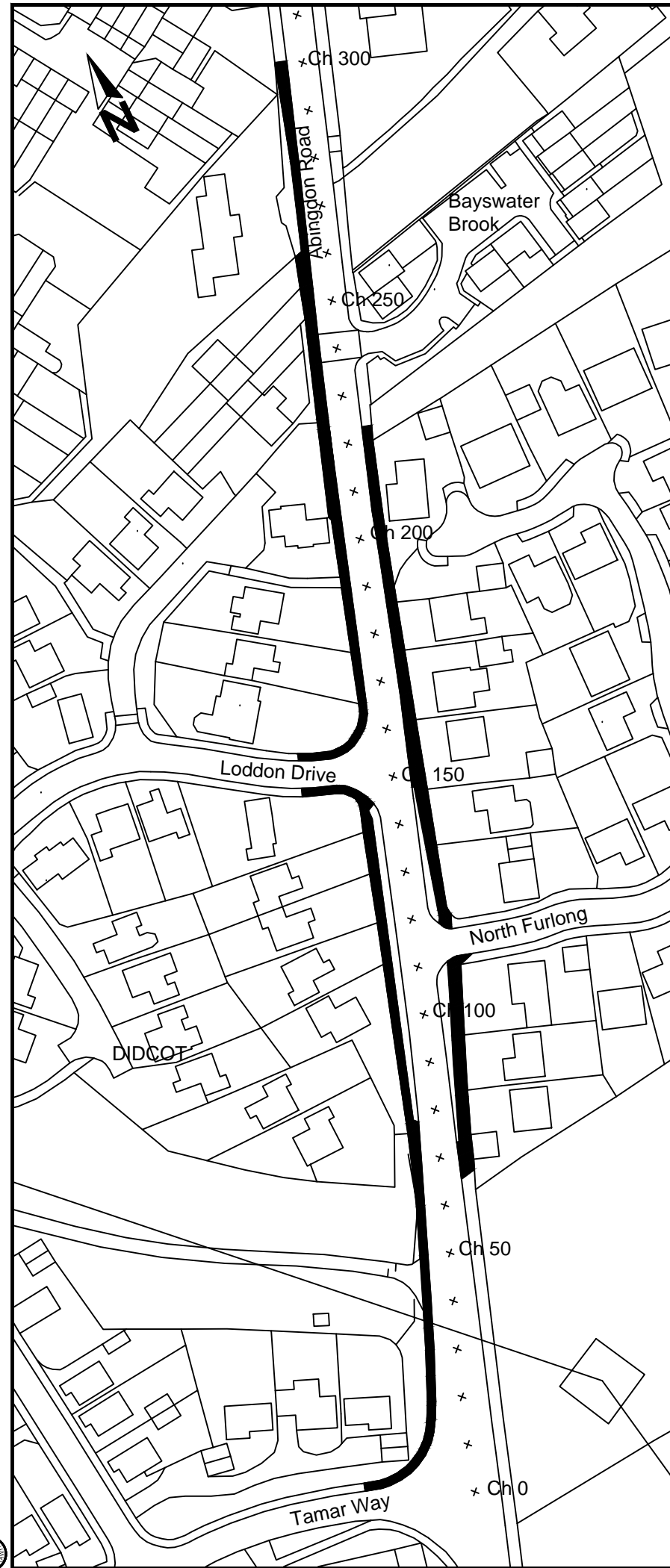


P:\4. Improvement Schemes\Schemes\Footway Programme 2017\18\07 Drawings\130 Didcot - Abingdon Road\130 Didcot - Abingdon Road.dwg



Note

Chainage 80 West Verge Topsoil

5.000m³ of imported topsoil behind the footway to remove sharp height difference.
Grass seeded area = 6.000m²

Footway Treatment Schedule			
West Footway			
Chainage	Treatment	Area	(m ²)
Start	Finish		
0	150	Resurface	330
150	224	Resurface	126
224	279	Overlay	127
279	300	Overlay	34
East Footway			
Chainage	Treatment	Area	(m ²)
Start	Finish		
66	113	Overlay	97
120	223	Overlay	212

PCC Edging (Edging Type F1) Schedule			
West Footway			
Chainage	Length	Comments	
Start	Finish	(m)	
21	24	3	Install
58	76	12	Relay
80	84	4	Relay
279	287	8	Relay

Timber Edging (Edging Type F3) Schedule			
Chainage	Length	Comments	
From	To	(m)	
78.4	145.0	69	West Footway
72.8	110.0	38	East Footway
118.1	147.0	147	East Footway

Proposed Kerb Schedule			
Both East & West Footways			
Chainage	Kerb	Length	
From	To	Type	(m)
67.0	67.9	K10	1.0
67.9	69.1	K13	1.2
69.1	70.0	K10	1.0

Proposed Kerb Removal Schedule		
Both East & West Footways		
Chainage	Total Length	
From	To	(m)
67.0	70.0	6

Proposed Paving Type 8 Schedule			
Both East & West Footways			
Chainage	Length	Width	
From	To	(m)	(m)
67.9	69.1	1.200	0.800

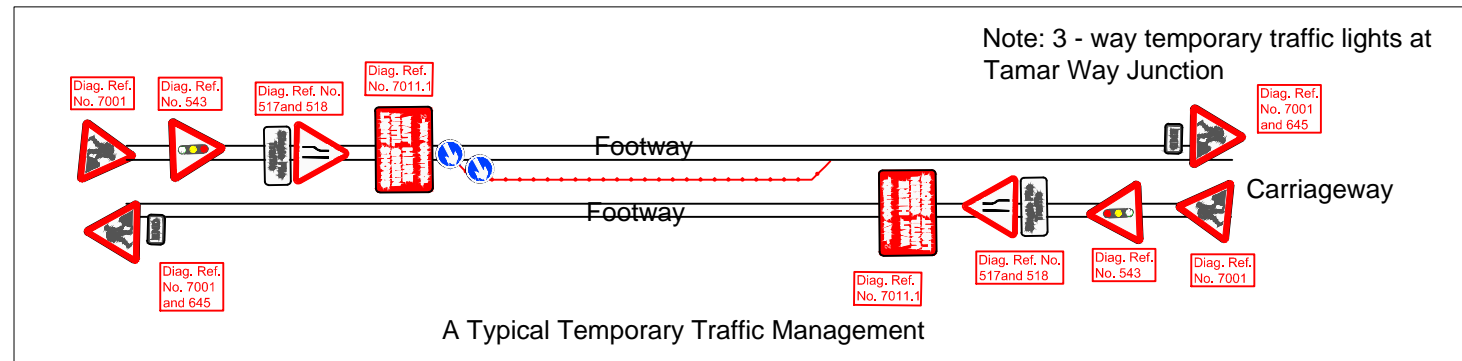
25mm thick Overlay

- Primary & secondary weed removal treatment.
- Remove loose debris off existing footway surface.
- Tack coat existing footway surface.
- 300mm wide 5mm deep chase-in on all edges of the footway.
- 0mm to 25mm thick SURFACE COURSE REGULATING.
- 25mm thick SURFACE COURSE - AC 6 close surf 100/150.

Footway Resurfacing

- Remove existing hard surface and remove unused planings off site.
- Primary & secondary weed removal treatment.
- Regulate formation with recycled fine planings..
- 50mm thick BASE - AC20 open bin 160/220.
- 25mm thick SURFACE COURSE - AC 6 close surf 100/150.

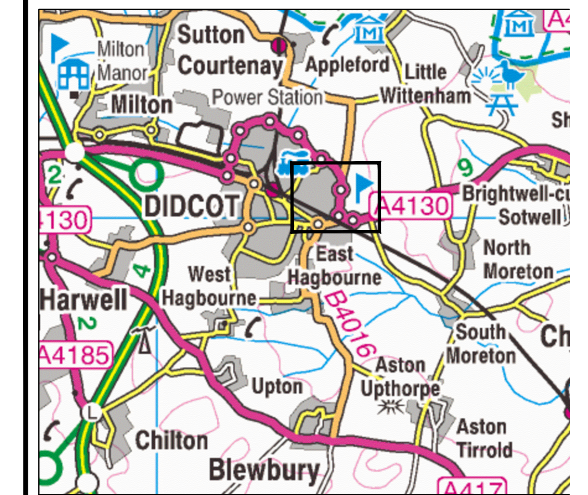
Existing Covers -(mm)	
1900 x 900.....	2
1200 x 700.....	1
1100 x 600.....	2
800 x 800.....	1
700 x 700.....	1
650 x 500.....	1
400 x 400.....	1
350 x 350.....	1
220 x 220.....	1



A Typical Temporary Traffic Management



1. The temporary traffic management shall be accordance with Safety at Street Works and Road Works Code of Practice.



Site Location

The exact limits and orientation of each propose treatment shall be confirmed by the Engineer prior to commencing the work.

Note

1. Furlong Close junction - Remove existing tarmac paving to tip off site. Replace the tactile paving with footway resurfacing.
Area = 10m² (this area is included in the footway treatment area)

Reproduced from the Ordnance Survey mapping with the permission of the Controller Her Majesty's Stationery Office © Crown Copyright. Unauthorised reproduction infringes Crown Copyright, and may lead to prosecution or civil proceedings. Oxfordshire County Council Licence No LA076805

Rev.	Date	Purpose of revision	Drawn	Checked

Mark Kemp
Deputy Director - Comm
Environment and Econ
Oxfordshire County Cou
Speedwell House
Speedwell Street
Oxford
OX1 1NE
Tel: (01865) 815700
Fax: (01865) 241577

Project title
**Footway Programme 2016/17
130 Didcot
Abingdon Road**

Drawing title
**Footway Treatment
&
Temporary Traffic Management**

Drawing Status			
Construction			
Scale @ A3	Drawn by	Checked by	Approved by
N.T.S.	RG	MW	
	Date drawn 08/06/16	Date checked 08/06/16	Date approved 08/06/16
Oxfordshire Project No. & File Ref C.AT00043.01 12.6.109			
Drawing No. S-001165/IFC/1100/001			Revision